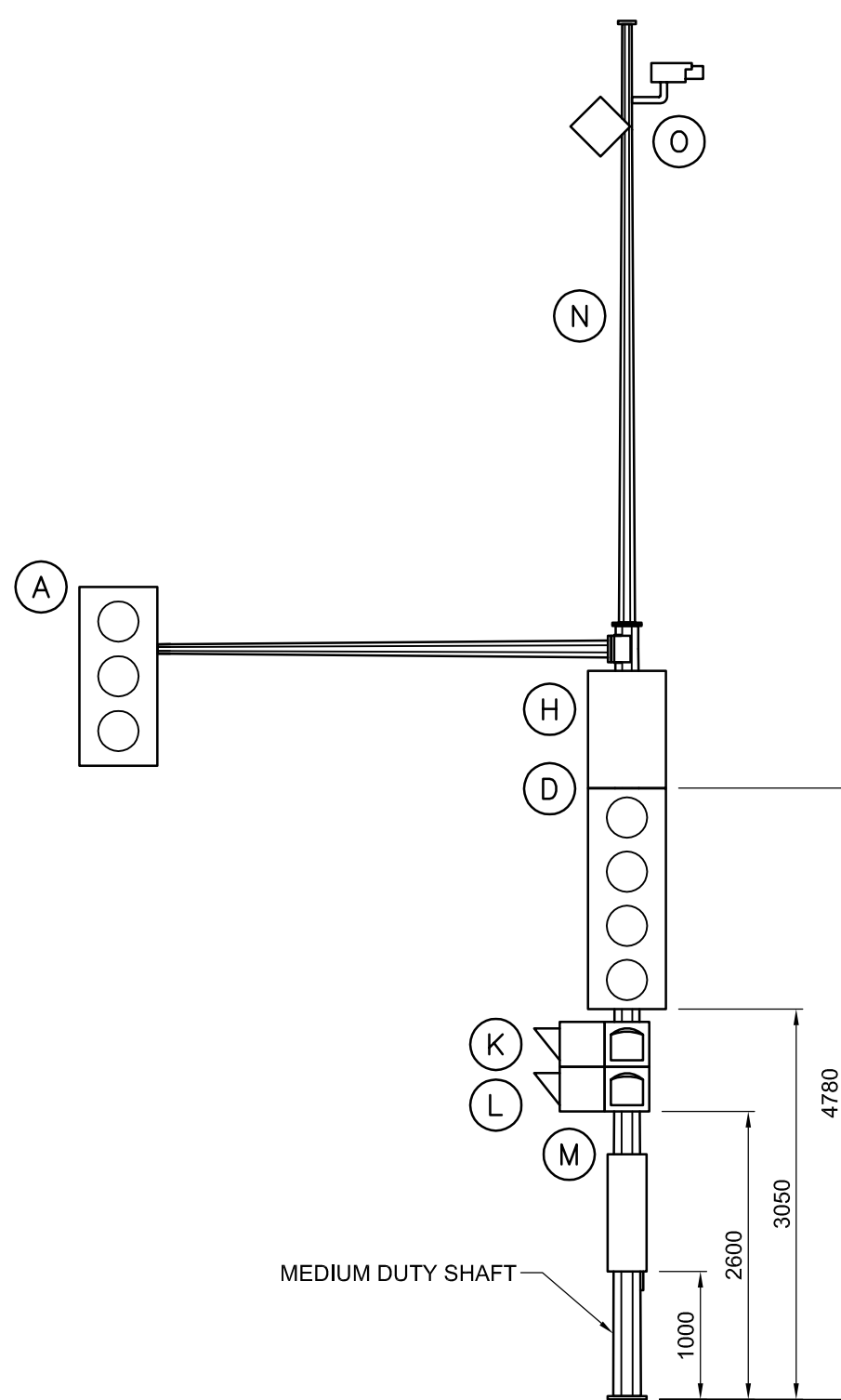
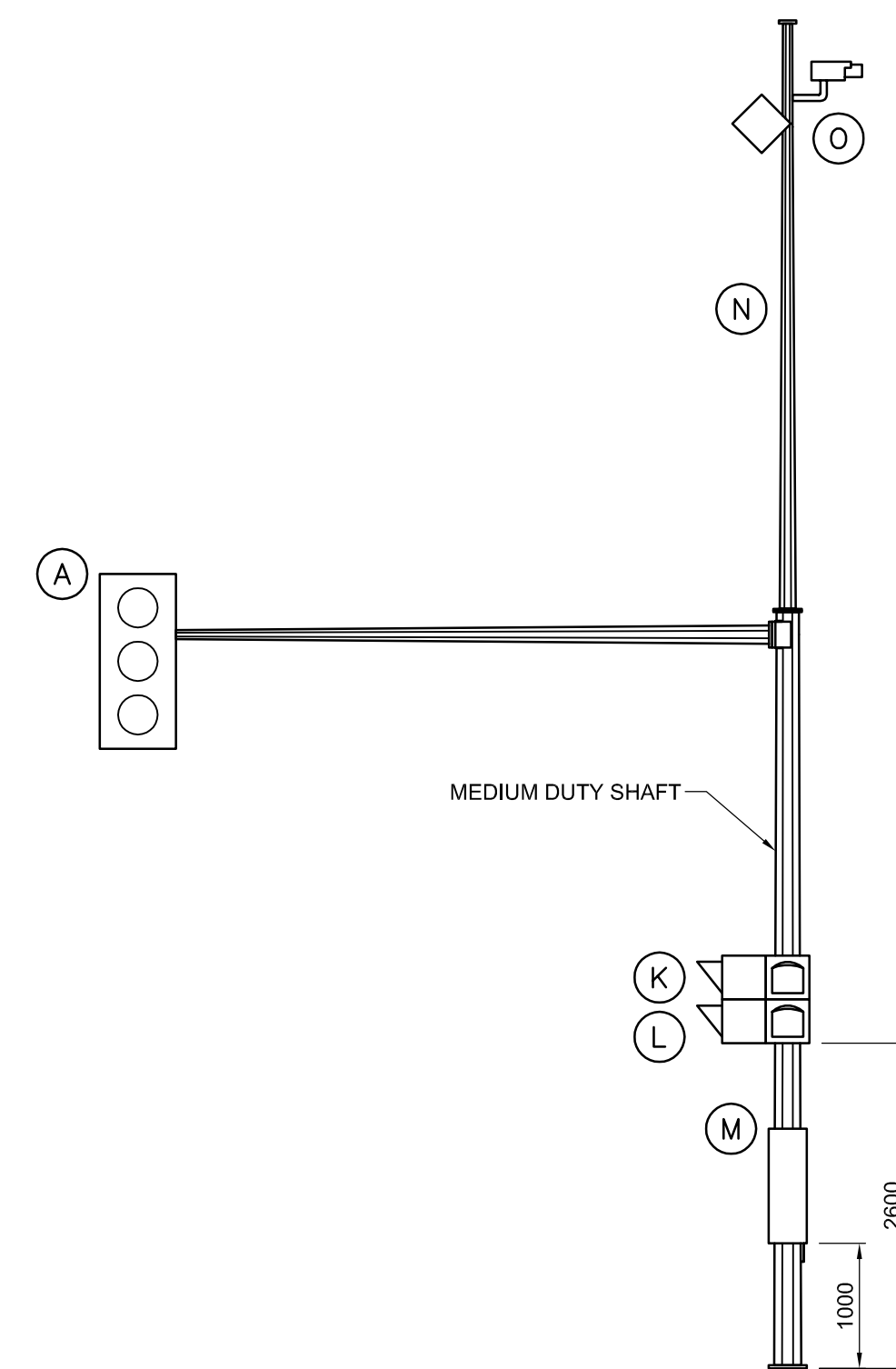


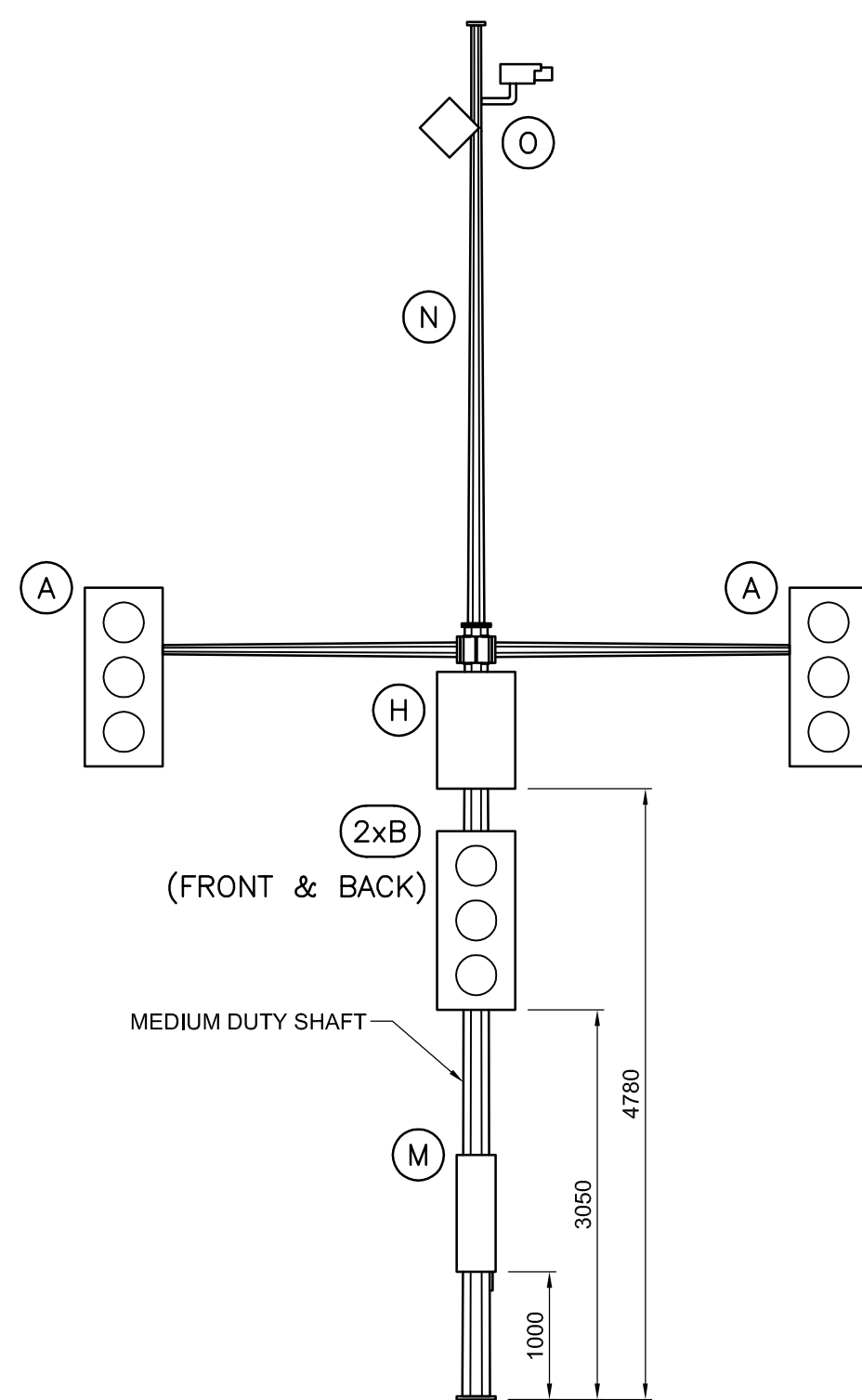
M8-Ga-E



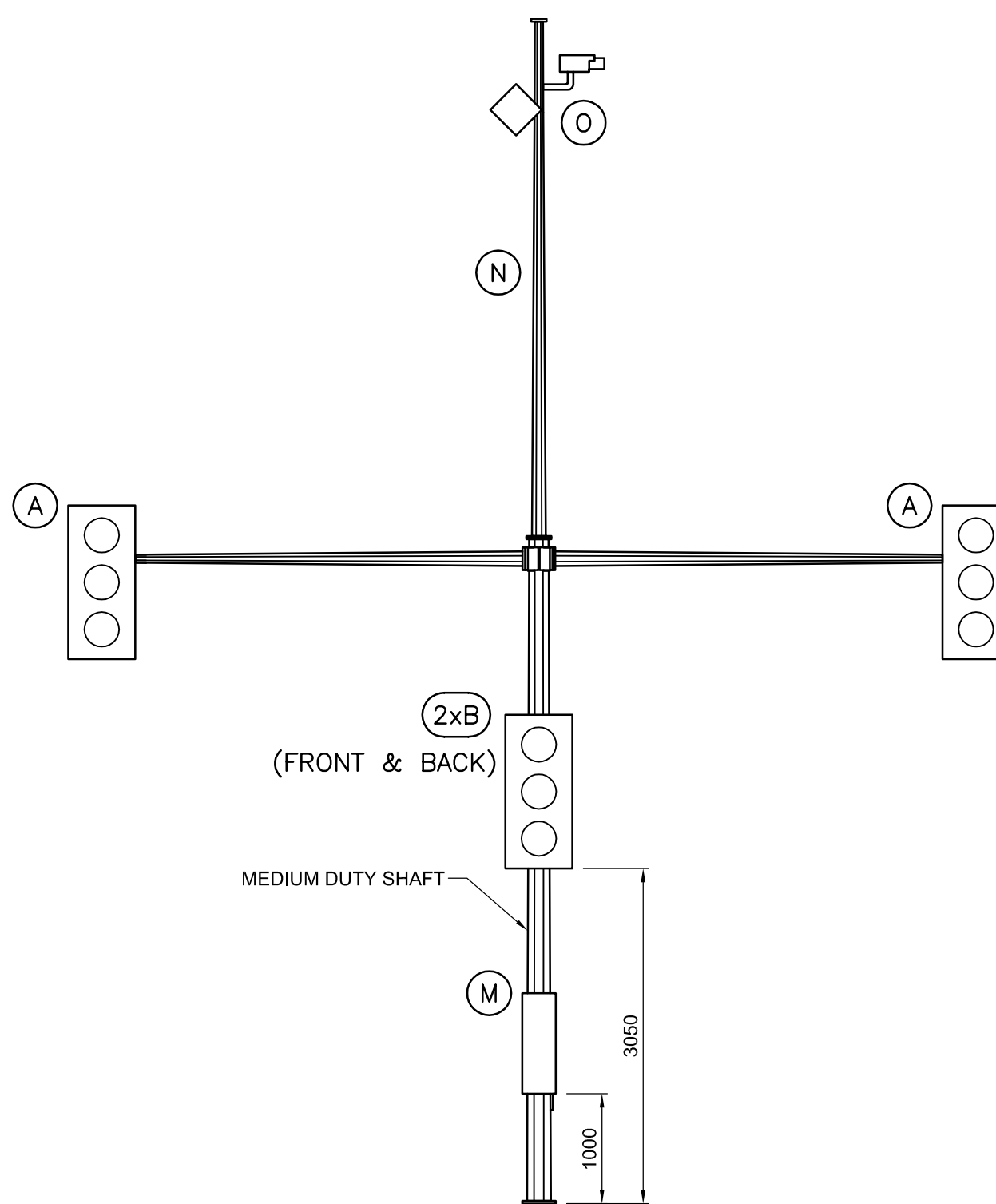
M12-Ga-E



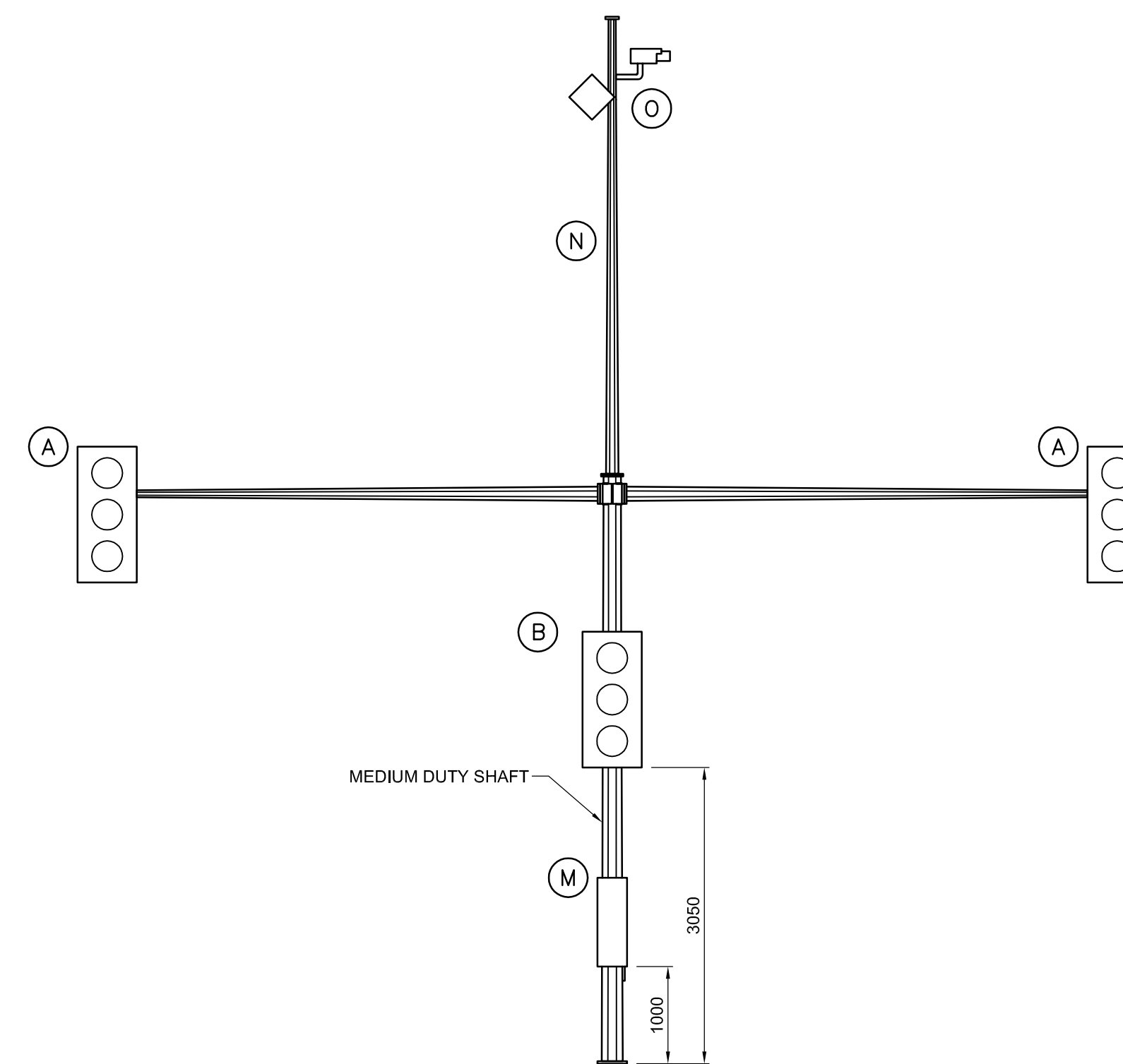
M16-Ga-E



M8/8-Gb-E



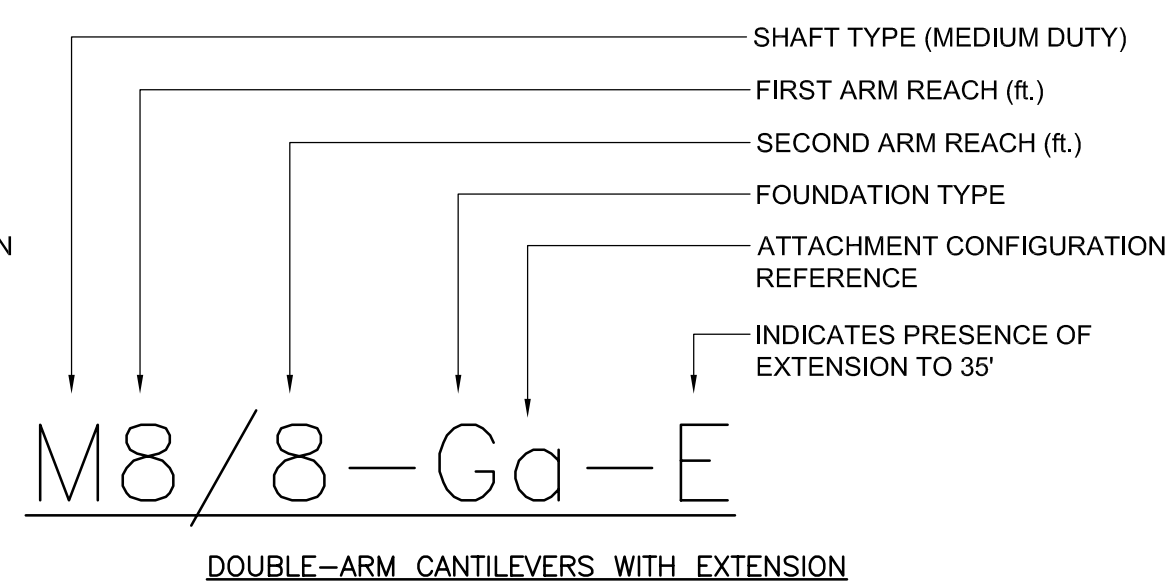
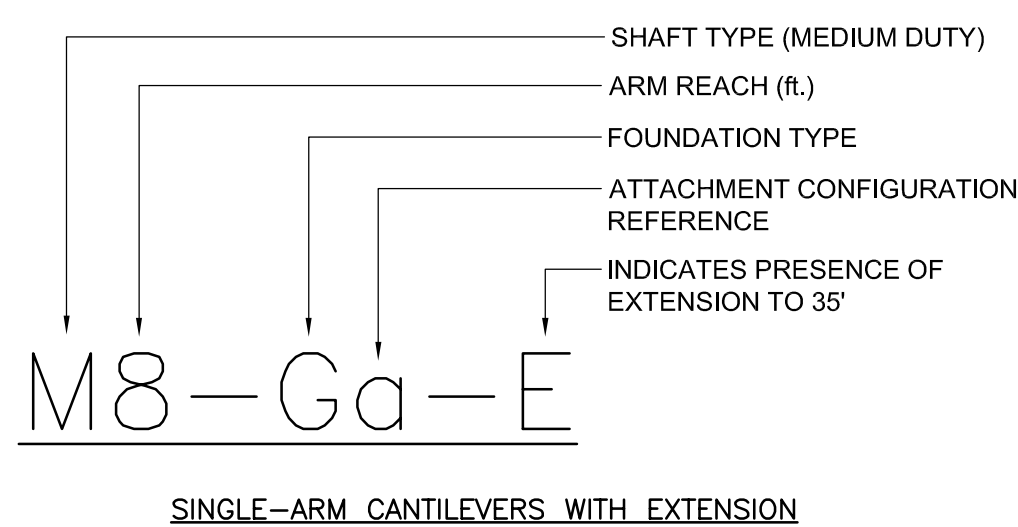
M12/12-Gb-E
M12/8-Gb-E



M16/16-Gb-E
M16/12-Gb-E
M16/8-Gb-E

NOTE:

1. ALL CONFIGURATIONS TO BE INSTALLED ON TYPE G-T BREAKAWAY BASE.
2. REFER TO SHEET 2 FOR ATTACHMENT DATA.
3. LOAD CONFIGURATIONS SHOWING SINGLE-ARM CANTILEVER ARM REACH TO THE LEFT, REACH TO THE RIGHT ALSO PERMITTED.



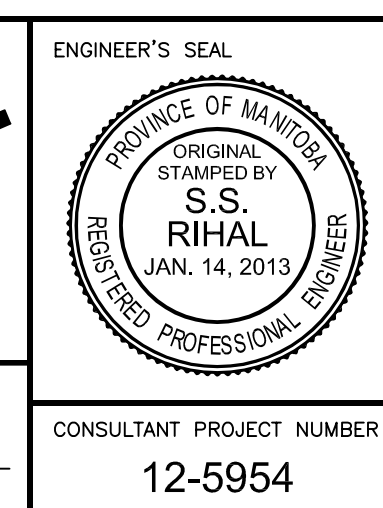
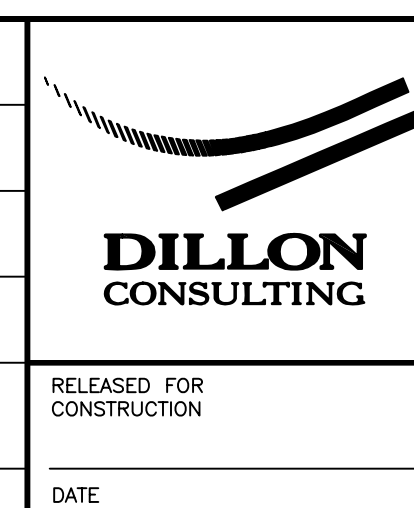
NAMING CONVENTION



REDUCED DRAWING
N.T.S.

| NO. | REVISIONS | DATE | BY | DATE |
|-----|------------------------------|---------|-----|------|
| 2 | REVISED BY DILLON CONSULTING | 1/10/14 | CDW | |
| 1 | ISSUED BY DILLON CONSULTING | 1/14/13 | CDW | |

| | |
|-------------|-----|
| DESIGNED BY | CDW |
| DRAWN BY | JGW |
| CHECKED BY | SSR |
| APPROVED BY | - |
| HOR. SCALE | NTS |
| VERTICAL | NTS |



THE CITY OF WINNIPEG
PUBLIC WORKS DEPARTMENT

ATTACHMENT CONFIGURATIONS FOR MEDIUM DUTY STRUCTURES - 8', 12' & 16' ARMS WITH EXTENSION

CITY DRAWING NUMBER: N/A
SHEET 6 OF 18
CONSULTANT DRAWING NUMBER: N/A

CONSULTANT PROJECT NUMBER: 12-5954